

UNIVERSITY OF CALICUT

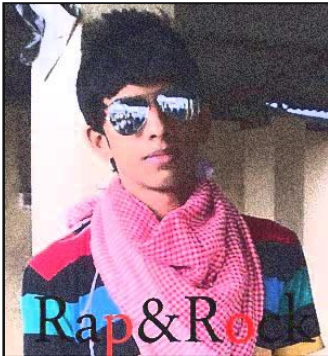
SCHOOL OF DISTANCE EDUCATION

B Com/BBA/BMMC (2011 Admn.)

Siraj.ch
www.facebook.com/sirajch
skype@sirajch1

III SEMESTER

COMMON COURSE



GENERAL INFORMATICS

QUESTION BANK

- Which of the following devices can be considered as input devices?
 - Keyboard and mouse
 - Scanner and printer
 - Hard drive and speakers
 - Microphone and CD-ROM drive
- Which of the following is not one of the four major functions of a computer?
 - Output
 - Storage
 - Processing
 - Calculation
- Which of the following is not an output device?
 - Printer
 - Hard drive
 - Monitor
 - Speakers
- The resolution of a monitor is governed by the
 - Size of the screen
 - Cost of the monitor
 - Number of pixels on the screen
 - Contrast of the pixels on the screen
- All of the following are important to consider when buying an LCD monitor EXCEPT
 - Brightness
 - Viewing angle
 - Pixel swap rate
 - Resolution
- Restarting the system after it has been completely powered off is called
 - A warm boot
 - A standby start
 - Hibernation
 - A cold boot
- An Ethernet port is used for connecting your computer to
 - A network
 - A printer
 - A monitor
 - A digital camera
- Which of the following devices is considered the brain of the computer?
 - Read only memory
 - Central processing unit
 - Random access memory
 - Motherboard
- Which of the following statements about the hard disks is TRUE?
 - Hard disks are always installed inside the system unit of a computer
 - Hard disks are considered volatile storage devices
 - With the rise of flash drives, hard disks are becoming legacy technology
 - Hard disks are considered nonvolatile storage devices

10. Which one of the following statements is not true about instant messaging?
 - a) It is a popular form of communication
 - b) You communicate in real time
 - c) Only two people can IM at the same time
 - d) Like e-mail, IM is not good for private conversations
11. When shopping online which of the following does not indicate that you have a secure connection display?
 - a) A closed padlock icon in the status bar
 - b) The URL begins with https
 - c) The word "secure" in the title bar
 - d) The VeriSign seal on the Web Page
12. Pages on the web have spots you can click called
 - a) Hyperlinks
 - b) Links
 - c) Hot spots
 - d) All of the above
13. Links you can click on a web site include
 - a) Highlighted text
 - b) Highlighted graphics
 - c) Buttons
 - d) All of the above
14. In addition to the web the internet also includes
 - a) E-mail
 - b) Gopher and ftp
 - c) Usenet and telnet
 - d) All of the above
15. To put a site on the web you need to work with
 - a) An access provider
 - b) A presence provider
 - c) The Internet Authority
 - d) A design company
16. A browser
 - a) Displays Web documents
 - b) Allows you to navigate
 - c) Allows you to copy, print and transfer documents
 - d) All of the above
17. To locate information on the web you can
 - a) Use a search engine
 - b) Select sites from list
 - c) Click any link to browse
 - d) All of the above
18. When you use a search engine, the term hit refers to
 - a) A popular site
 - b) Any site that's listed
 - c) Any site that's related to popular music
 - d) Any site related to baseball
19. Search engines search indexes of key terms that are often compiled by a software program called
 - a) An insect
 - b) A spider
 - c) A worm
 - d) None of the above
20. The term bandwidth refers to
 - a) How much data can be sent through a connection
 - b) The amount of data in a multimedia file
 - c) How fast your computer is
 - d) None of the above

21. Browsers are enhanced by installing
 - a) Plug-ins
 - b) Helper applications
 - c) A new version
 - d) All of the above
22. On the keyboard, the key you press to finalize a command or entry is
 - a) Enter
 - b) Control
 - c) Escape
 - d) All of the above
23. When selecting a scanner, be sure to base your decision on
 - a) The number of bits assigned to each pixel
 - b) Its optical resolution
 - c) Whether it has optical character recognition software included
 - d) All of the above
24. The most common computer pointing device is
 - a) Your finger
 - b) A mouse
 - c) A trackball
 - d) None of the above
25. The overall design of a font is called its
 - a) Type style
 - b) Type face
 - c) Type size
 - d) Serif
26. The name of the first digital computer is
 - a) ENICAC
 - b) Mark I
 - c) IBM 132
 - d) APPLE II
27.designed Remington Rand became one of the first commercially available computers.
 - a) UNIVAC-I
 - b) ENICAC
 - c) Mark I
 - d) none of the above
28. notebook and smaller computers usually use
 - a) liquid crystal displays
 - b) Electroluminescent displays
 - c) Field emission displays
 - d) All of the above
29. Second generation computers containedin place of vacuum tubes.
 - a) transistors
 - b) liquid crystal displays
 - c) Both a and b
 - d) Neither a nor b
30.developed the integrated circuits
 - a) Kim Philby
 - b) Jack Philby
 - c) John Neumann
 - d) Thomas Watson
31. Which of the following period is the first generation of computing?
 - a) 1945-55
 - b) 1956-63
 - c) 1964-1971
 - d) None of the above
32. Which of the following is the first general purpose computer?
 - a) Mark I
 - b) ENIAC
 - c) IBM123
 - d) Apple II
33. Which of the following period is the second generation of computing?
 - a) 1945-55
 - b) 1956-63
 - c) 1964-1971
 - d) None of the above

34. IBM's System/360 is an example ofgeneration computer.
- a) First
 - b) Second
 - c) Third
 - d) Fourth
35. The first personal computer was introduced by
- a) IBM
 - b) Commodore
 - c) Apple
 - d) None of the above
36. Fifth generation computers are capable of
- a) Language translation
 - b) Language processing
 - c) Decision Making
 - d) All of the above
37. Which of the following memory is the additional memory attached to a computer system?
- a) Primary memory
 - b) Secondary memory
 - c) RAM
 - d) ROM
38. ----- unit of CPU directs and co-ordinates all operations of a computer.
- a) ALU
 - b) RAM
 - c) CONTROL UNIT
 - d) REGISTER
39. Memory of a computer is generally expressed in terms of 'K', where 'K' stands for
- a) 1042
 - b) 1024
 - c) 1204
 - d) None of these
40. The first electronic computer was
- a) Mark I
 - b) UNIVAC
 - c) ENIAC
 - d) None of the above
41. -----cards are an integrated circuit that generates an audio signal and sends it to a computer's speakers:
- a) Video card
 - b) Sound cards
 - c) Web cam
 - d) None of these
42. FORTRAN is a :
- a) High level language
 - b) Low level language
 - c) Assembly language
 - d) None of these
43. The base of operations for the brains of a computer is :
- a) Desktop
 - b) Keyboard
 - c) Motherboard
 - d) PDA
44. One cannot write new data in this type of memory:
- a) RAM
 - b) ROM
 - c) CPU
 - d) None of these
45. These are machines which are used in computers to communicate with other computing systems:
- a) Motherboard
 - b) Modem
 - c) CD ROM
 - d) Graphic cards
46. The function of ALU is:
- a) To do arithmetic operation
 - b) To control other parts of a computer
 - c) To do arithmetic and logic operations
 - d) To produce output

47. Mouse was invented by.....in 1963
- a) Douglas Engelbart
 - b) Jack Philby
 - c) John Neumann
 - d) Thomas Watson
48. Any machine capable of representing information from a computer is..... .
- a) Output device
 - b) Input device
 - c) Both a and b
 - d) None of the above
49. USB means.....
- a) Universal Serial Bus
 - b) University Sector Bus
 - c) Unique Serial Bus
 - d) None of these
50. LAN stands for.....
- a) Local Area Network
 - b) Loyal Area Network
 - c) Large Area Network
 - d) None of these
51. MAN stands for.....
- a) Metropolitan Area Network
 - b) Man Area Network
 - c) Manchester Area Network
 - d) None of these
52. WAN stands for.....
- a) Wireless Area Network
 - b) Wired Area Network
 - c) Wide Area Network
 - d) None of these
53. PAN stands for.....
- a) Pan American Network
 - b) Personal Area Network
 - c) Personal Academic Network
 - d) None of these
54. VPN stands for.....
- a) Virtual private network
 - b) Very private network
 - c) Voice passing network
 - d) None of these
55. GB stands for
- a) Gigabyte
 - b) Giant byte
 - c) Global bus
 - d) None of these
56. PDA stands for
- a) Personal Digital Assistant
 - b) Personal Dairy Assistant
 - c) Private Digital Assistant
 - d) None of these
57. is the primary large printed circuit board within a personal computer.
- a) Motherboard
 - b) Main memory
 - c) Magnetic disk
 - d) None of these
58. CRT means
- a) Cathode Ray Tube
 - b) Central Ray Tube
 - c) Cathode Ray Tray
 - d) None of these
59. Magnetic disks are also known as.....
- a) Hard disk
 - b) Soft disk
 - c) Compact disk
 - d) None of these
60. Which of the following documents handling system is not used for storage of documents
- a) CD-ROM
 - b) Microfiche
 - c) Microfilm
 - d) None of these

61. Which of the following are input devices?
- a) Keyboard
 - b) Mouse
 - c) Card reader
 - d) All of these
62. Examples of output devices are
- a) Screen
 - b) Printer
 - c) Speaker
 - d) All of these
63. VDU is also called
- a) Screen
 - b) Monitor
 - c) Both 1 & 2
 - d) Printer
64. Any two computers connected through a telephone line should be connected with a.....on both sides.
- a) Printer
 - b) Scanner
 - c) Hard disk
 - d) Modem
65. Which of the following is not a transmission medium
- a) Twisted pair cable
 - b) Coaxial cable
 - c) Modem
 - d) Satellite system
66. A server in LAN is a
- a) NIC
 - b) Work station with huge secondary storage
 - c) Device offering service to user
 - d) None of these
67. Which of the following items is not used in Local Area Networks?
- a) Modem
 - b) Printer
 - c) Computer
 - d) Cable
68. Different computers are connected to LAN by a cable and
- a) Special wires
 - b) Telephone lines
 - c) Modem
 - d) Interface card
69. What is the name of the network technology in which there are bidirectional links between each possible node?
- a) Star
 - b) Ring
 - c) Mesh
 - d) Tree
70. The most flexible network topology is
- a) Ring
 - b) Star
 - c) Bus
 - d) None of these
71. Which of the following topologies is highly reliable?
- a) Ring
 - b) Star
 - c) Fully connected mesh
 - d) None of these
72. Data communication cable laying is not required when using
- a) Optical fibre
 - b) Coaxial fibre
 - c) Microwave transmission
 - d) None of these

73. Which data communication method is used for sending data in both direction at the same time?
- a) Half duplex
 - b) Full duplex
 - c) Super duplex
 - d) Simplex
74. Which of the following is suitable for networking within a building?
- a) WAN
 - b) LAN
 - c) MAN
 - d) VAN
75. Which of the following is suitable for networking in two adjacent buildings?
- a) WAN
 - b) LAN
 - c) MAN
 - d) VAN
76. Ethernet networks transmit data in small units. These units are called.....
- a) Baud
 - b) Frames
 - c) Data Bundles
 - d) None of these
77. Baud rate means
- a) The rate at which data is transferred
 - b) The rate at which data is processed
 - c) The rate at which data is received from the modern
 - d) None of these.
78. Baud rate is measured in
- a) Bits per second
 - b) Bytes per second
 - c) Megabytes per second
 - d) None of these
79. Data can be transmitted in the form of.....
- a) Serial data transmission
 - b) Parallel data transmission
 - c) Both of these
 - d) none of these
80. Our public telephone network is also known as.....
- a) Public Switched Telephone Network
 - b) Private Switched Telephone Network
 - c) Value Added Network
 - d) None of these
81. Which of the following is most popular web browser
- a) Netscape navigator
 - b) Novell netware
 - c) Windows NT
 - d) Internet Explorer
82. Which must be a valid name of a website?
- a) Web.india.com
 - b) www.roseypublications.com
 - c) rosey@yahoo.co.in
 - d) None of these
83. Which of the following is a valid name of an e-mail address?
- a) Web.india.com
 - b) www.roseypublications.com
 - c) rosey@yahoo.co.in
 - d) None of these
84. The two broad categories of software are
- a) Word processing and spreadsheets
 - b) Windows and Mac OS
 - c) Transaction and application
 - d) System and application
85. Word processing, spreadsheet and photo-editing are examples of:
- a) Application software
 - b) System software
 - c) Operating system software
 - d) Platform software

86.is a set of computer programs used on a computer to help perform tasks.
- a) A processor
 - b) Memory
 - c) Software
 - d) A command
87. Linux is a Operating system
- a) Open-source
 - b) Windows
 - c) Microsoft
 - d) Mac
88. Auses pictures(icons) and menus displayed on the screen to send commands to the computer system.
- a) Command-based user interface
 - b) GUI
 - c) System utility
 - d) None of these
89. Which of the following statements is wrong
- a) Windows XP is an operating system
 - b) Linux is owned and sold by Microsoft
 - c) Photoshop is graphical design tool by Adobe
 - d) Linux is a free and open source software
90. Which of the following is true?
- a) MP3 files contain audio data
 - b) MP3 files are the only recognized format for digital audio
 - c) Windows media player is able to organize large collections of audio files.
 - d) Only A and C are true.
91. Which one of the following statements is NOT true about instant messaging?
- a) It is a popular form of communication
 - b) You communicate in real time
 - c) Only two people can MI at the same time
 - d) Like e-mail IM is not good for private conversations
92. When shopping online, which of the following does NOT indicate that you have a secure connection displays?
- a) A closed padlock icon in the status bar.
 - b) The URL begins with https.
 - c) The word "secure" in the title bar.
 - d) The VeriSign seal on the Web page.
93. With a podcast , you can
- a) Subscribe to video and audio content.
 - b) Have the most recent content "delivered" automatically.
 - c) Play the video and audio content on an MP3 player.
 - d) All of the above.
94. An online journal or chronological posting of thoughts and opinion is a[n]
- a) Podcast.
 - b) Wiki
 - c) Blog
 - d) IM chat

95. When searching the internet which of the following is true?
- a) It doesn't matter which search engine you use; they all provide the same results
 - b) A subject directory is best to use when you can provide keywords
 - c) Boolean operators and advanced search pages will help you to narrow your results
 - d) Search engines are best to use when you need to narrow the search by specific topics
96. In a web address <http://www.irs.gov>, the .gov would be considered the
- a) URL
 - b) Top-level domain
 - c) Protocol
 - d) Web address
97. Which of the following provides the fastest broadband internet connection by transmitting data at the speed of light
- a) Cable
 - b) DSL
 - c) Fiber Optics
 - d) Satellite
98. The primary disadvantage to DSL internet access is the quality and effectiveness of service
- a) Are affected by the number of users on the same DSL line at any time
 - b) Depend on your proximity to a phone company central office
 - c) Can be affected by adverse weather conditions
 - d) Depend on the internet service provider you select
99. A kilobyte stores how many numbers of bytes?
- a) 1000
 - b) 1024
 - c) 1048
 - d) 100
100. What is a Podcast?
- a) Is a clip of audio or video content that is broadcast over the internet
 - b) Is an instant messaging tool
 - c) Is a free popular email service
 - d) Is a web-conferencing tool
101. Which of the following is not a use of computers in the legal environment?
- a) Creating animations that simulate the crime for use in the courtroom
 - b) Tracking criminal behavior patterns
 - c) Predicting criminal behavior patterns
 - d) Conducting interviews with suspects
102.integrates communications, data management, and security services to allow business applications within different organizations to automatically interchange information.
- a) E-Commerce
 - b) E-Governance
 - c) E-Banking
 - d) None of the above
103. Nanotechnology is the science of things on the order of
- a) Inches
 - b) Milometers
 - c) Nanometers
 - d) Nanobytes
104. Computer systems can NOT be trained to understand
- a) The Indian Taxcode
 - b) The human emotion
 - c) A good joke
 - d) The perfect golf swing

105. The most wired country in the world is
- a) Germany
 - b) Japan
 - c) The US
 - d) South Korea
106. The device that tracks movement is a
- a) GPS
 - b) RFID tag
 - c) Mobile phone
 - d) Patient simulator
107. Which of the following is not a good reason to learn more about computers?
- a) To keep your home secure
 - b) To increase your career options
 - c) To learn how to hack into an organisation's main computer
 - d) To make better informed purchasing decisions
108. Infrared scanners cannot
- a) Scan pages and detect unusual objects
 - b) Be worn on the wrist
 - c) Translate a bar code into a computer data file
 - d) Be used by shipping companies to track packages as they move around the world
109. Computer forensics
- a) Uses computer technology to gather potential legal evidence
 - b) Helps identify the remains of bodies
 - c) Investigates a suspect's home computer for evidence
 - d) All of the above
110. Robotic surgery devices help physicians because
- a) They make more accurate incisions
 - b) The doctor does not have to be involved in the actual surgery
 - c) They monitor and make suggestive procedure
 - d) If runs into complications, they can suggest creative alternatives.
111. Artificial Intelligence is concerned with making computers behave like
- a) Humans
 - b) Robots
 - c) Home appliances
 - d) None of these
112. In Turing test the number of participants are:
- a) One
 - b) Three
 - c) Four
 - d) None of the these
113. Knowledge based systems have been developed for fields such as:
- a) Financial markets
 - b) Diagnosing diseases
 - c) Scheduling airplanes
 - d) All of these
114.) emoticon stands for
- a) Happy
 - b) Sad
 - c) surprise
 - d) None of the above
115. Individuals who are not involved in expert system
- a) Mechanical Engineer
 - b) End User
 - c) Problem Solving expert
 - d) Knowledge engineer

116. Which of the following are artificial intelligence languages?
- a) PROLOG
 - b) LISP
 - c) HTML
 - d) Both (a) and (b)
117. News stories on Information Technology may be on topics such as
- a) The information superhighway
 - b) Multimedia
 - c) The internet
 - d) All of the above
118. Information Technology can
- a) Process raw data
 - b) Recycle processed information and use it as data in another processing step
 - c) Package information so it is easier to understand
 - d) All of the above.
119. The five steps, input, processing, output, storage and retrieval, and distribution and communication are all part of
- a) The information super highway
 - b) The internet
 - c) The information processing cycle
 - d) None of the above
120. Computer data can include
- a) Prices
 - b) Flight numbers
 - c) Video clips and sounds
 - d) All of the above
121. Typical operating systems include
- a) Microsoft word and Excel
 - b) Adobe Photoshop and PageMaker
 - c) Both a and b
 - d) Neither a nor b
122. Computers are used in business to
- a) Process transactions
 - b) Allow people to work at home
 - c) Do desktop publishing of documents
 - d) All of the above
123. GPS is used to
- a) Determine location
 - b) Make weather forecasts
 - c) Enhance computer performance
 - d) Guide satellites in space
124. The smallest computer (in size) is most likely called a
- a) Mainframe computer
 - b) Server
 - c) Handheld, palm-top, or personal digital assistant
 - d) Notebook computer
125. The most powerful computer is most likely called a
- a) Workstation
 - b) Minicomputer
 - c) Mainframe
 - d) Supercomputer
126. A computer advertised as a server might also be called a
- a) Workstation
 - b) Mainframe
 - c) Desktop computer
 - d) Any of the above
127. A personal computer can
- a) Add numbers
 - b) Sorts lists
 - c) Display graphs
 - d) All of the above

128. In this type e-governance is created between the government and citizen?
a) G2G c) G2B
b) G2C d) None of these
129. CAD stands for:
a) Computer Aided Manufacture c) Computer Aided Device
b) Computer Aided Development d) None of these
130. Computer to computer exchange of business information is done through:
a) CAM c) ERP
b) CAD d) EDI
131. This refers to the use of small and portable computing devices in wireless enabled networks that provide wireless connections to a central main server.
a) Cloud computing c) Green computing
b) Mobile computing d) None of these
132. This is a mechanism of delivery of short messages over the mobile networks.
a) MMS c) EMS
b) SMS d) None of these
133. Which of the following is not a wireless communication device?
a) Bluetooth c) Infrared communication
b) GPS d) None of these
134. This is a satellite-based navigation system made up of a network of 24 satellite placed into orbit by the US Department of Defence.
a) Bluetooth c) Infrared communication
b) GPS d) None of these
135. This is a plastic card embedded with a computer chip that stores and transacts data between users:
a) Credit card c) Debit card
b) Smart card d) None of these
136. These computers made of genes building blocks
a) Motherboard c) DNA computers
b) Personal computers d) Graphic cards
137. GPS satellites circle the earthtimes a day:
a) Three times c) Six times
b) Two times d) Once in a month
138.is typically a medication ordering and fulfillment system
a) CPOE c) CDSS
b) E H R d) PACS
139.provides physicians and nurses with real-time diagnostic and treatment recommendations.
a) CDSS c) E H R
b) CPOE d) PACS

140. ERP means.....
- a) Enterprise Resource Planning
 - b) Electronic Report Presentation
 - c) Electronic Resource Planning
 - d) None of these
141. Computer to computer exchange of business documents is called.....
- a) EDI
 - b) GPS
 - c) SMS
 - d) None of these
142. ICT stands for.....
- a) Information and Communication Technology
 - b) International communication technology
 - c) Inter school communication technology
 - d) None of these
143. G2G e-governance means.....
- a) Government to Government
 - b) Government to Citizens
 - c) Government to Employees
 - d) None of these
144. G2C e-governance means.....
- a) Government to Government
 - b) Government to Citizens
 - c) Government to Employees
 - d) None of these
145. G2E e-governance means.....
- a) Government to Government
 - b) Government to Citizens
 - c) Government to Employees
 - d) None of these
146. G2B e-governance means.....
- a) Government to Business
 - b) Government to Citizens
 - c) Government to Employees
 - d) None of these
147. E H R means.....
- a) Electronic Health Record
 - b) Electronic Health Care
 - c) Election hour report
 - d) None of these
148. is a communication technology that allows users to exchange multimedia communication between capable mobile phones and other devices.
- a) Bluetooth
 - b) Blue eyes
 - c) Blue devices
 - d) None of these
149. Mobile computing is used for only in professions that
- a) Don't rely on Internet access
 - b) Where work requires intensive graphics and large display screens
 - c) Where work requires intensive computer processing power
 - d) None of the above
150. is a computer based tool for mapping and analyzing things that exist and events that happen on earth.
- a) GIS
 - b) GPS
 - c) BIS
 - d) None of the above
151. GPS is a..... owned utility.
- a) US
 - b) Japan
 - c) Russian
 - d) UK

152. The device best suited for a sales person who has to demonstrate processor-intensive multimedia to clients is a
- a) Smartphone with Internet capabilities
 - b) PDA with an external monitor
 - c) Tablet PC
 - d) Notebook computer
153. GPS chips are
- a) installed in all newly manufactured automobiles
 - b) Installed in all newly manufactured cell phones
 - c) Reliable only when installed in tablet PCs
 - d) Available only for PDAs and smart phones
154. For internet access you should obtain
- a) A tablet PC
 - b) A smartphone
 - c) A PDA
 - d) All of the above can have internet capabilities
155. Portable devices that can be synchronized with your home computer are
- a) PDAs and GPS units
 - b) iPods PDAs and Cell phones
 - c) pagers and GPS units
 - d) any device with Bluetooth.
156. What is an information?
- a) Raw data
 - b) Processed data
 - c) Collection of data
 - d) None of these
157. What is the full form of SMS?
- a) Switched mode system
 - b) Short Message Service
 - c) Short Mail Service
 - d) None of these
158. What is the full form of MMS?
- a) Mobile mode system
 - b) Mobile Message Service
 - c) Multimedia Messaging Service
 - d) None of these
159. The concept of line of sight means
- a) Alignment of sending and receiving devices
 - b) Alignment of only hand devices
 - c) Alignment of only receiving devices
 - d) None of these
160. What is the full form of EDI?
- a) Electronic Data Interchange
 - b) Electronic Data Information
 - c) Electric Data Interchange
 - d) None of these
161. Which of the following support is not available on MMS?
- a) Text
 - b) Video
 - c) Graphics
 - d) None of these
162. Computer to computer exchange of business is done through
- a) E-banking
 - b) E-commerce
 - c) EDI
 - d) Internet banking

163. The height at which the GPS satellite is above the earth's surface is
- a) 12000 miles
 - b) 1000km
 - c) 1000miles
 - d) None of these
164. The knowledge that can be spoken in language and transmitted among individuals.
- a) General Knowledge
 - b) Explicit knowledge
 - c) Tacit knowledge
 - d) None of the above
165. This is the exclusive right granted by statute to the author of the works to reproduce dramatic, artistic, literary or musical work or to authorize its reproduction by others.
- a) Patent
 - b) Copy right
 - c) Trade Mark
 - d) None of the above
166. This is a legal monopoly granted for a limited time to the owner of an invention.
- a) Patent
 - b) Copy right
 - c) Trade Mark
 - d) None of the above
167. Any symbol, logo, or name used to enable the public to identify the supplier of goods.
- a) Patent
 - b) Copy right
 - c) Trade mark
 - d) None of the above
168. The Indian Patent Act finally amended in
- a) 1970
 - b) 1996
 - c) 2005
 - d) None of the above
169. CAI stands for:
- a) Computer Aided Training
 - b) Computer Assisted Instruction
 - c) Computer aided Technology
 - d) None of these
170. This network is an autonomous Inter-University Centre of the University Grants Commission.
- a) INFLIBNET
 - b) NICENET
 - c) BRNET
 - d) None of these
171.knowledge are also known as informal knowledge.
- a) Tacit knowledge
 - b) Explicit knowledge
 - c) Information
 - d) None of these
172. IPR stands for.....
- a) Intellectual Property Rights
 - b) Individual Property Rights
 - c) Inter Person Rights
 - d) None of these
173.knowledge are also known as formal knowledge.
- a) Explicit knowledge
 - b) Tacit knowledge
 - c) Information
 - d) None of these
174.is one of many web-based learning management systems(LMS) through which teachers can work with students, whether in distance mode or as a supplement to face-to-face teaching.
- a) NICENET
 - b) INFLIBNET
 - c) BRNET
 - d) None of these

175.is a prototype portal site for biological information and bio-resource information.
- a) BRNET
 - b) INFLIBNET
 - c) NICENET
 - d) None of these
176. The patent system in India is governed by the
- a) Patents Act, 1970
 - b) Patents Act, 1911
 - c) Patents Act, 1972
 - d) None of these
177. CBT stands for:
- a) Computer Based Training
 - b) Computer Based Tooling
 - c) Computer Based Technology
 - d) None of these
178. TRIPS means.....
- a) Trade Related Aspects of Intellectual Property Rights
 - b) Trade Related Activities and Information Providing Rights
 - c) Round trip to Europe
 - d) None of these
179. Which of the following is a processed thing?
- a) Data
 - b) Information
 - c) Database
 - d) None of these
180. Which of the following symbols cannot be used in searching on the internet?
- a) ~
 - b) +
 - c) -
 - d) None of these
181. Which of the following operators cannot be applied to search?
- a) OR
 - b) NOT
 - c) AND
 - d) BOOL
182. Intellectual Property Rights does not cover the following area
- a) Copyright
 - b) Patents
 - c) Trademark
 - d) None of these
183. Indian copyright act came into existence in the year
- a) 1950
 - b) 1955
 - c) 1957
 - d) None of these
184.developed a computer language called LOGO, so that children could program computers.
- a) Seymour Papert
 - b) Jean Piaget
 - c) Microsoft
 - d) None of the above
185. is a computer language developed by Seymour Paper and his colleagues at MIT, so that children could program computers.
- a) LOGO
 - b) POGO
 - c) GIGO
 - d) None of the above
186. When shopping online which of the following does NOT indicate that you have a secure connection displays?
- a) A closed padlock icon in the status bar
 - b) The URL begins with https
 - c) The word "secure" in the title bar
 - d) The VeriSign seal on the web page.

187. Which of the following is annoying, but really doesn't render any harm to your computer?
- a) Adware
 - b) Spyware
 - c) Sneakware
 - d) Malware
188. One scam that lures internet users into revealing personal information is
- a) Malware
 - b) Phishing
 - c) spam
 - d) internet hoax
189. Cell phones use which category of operating systems
- a) Single user, single task
 - b) Multi user, multi task
 - c) Single user, multitask
 - d) Real-time
190. When hacker use a program that pretends to be useful to a user while actually allowing the hacker to gain control of the user's computer, this is called a
- a) Zero-day Attack
 - b) Trojan Horse Attack
 - c) Distributed Denial of Service Attack
 - d) Boot Sector Virus Attack
191. Which is a benefit of a firewall?
- a) They make it harder for a hacker to locate specific computer on a network
 - b) They repeatedly change the IP address of the router
 - c) They open unused logical ports to increase throughput
 - d) They filter out unwanted wireless signals
192. Viruses that travel from computer to computer on their own(independent of host) are called
- a) Worms
 - b) Stealth viruses
 - c) Logic bombs
 - d) Macro viruses
193. Flash drives have replaced floppy disks as the preferred method of portable storage because:
- a) They hold much more data than floppy disks
 - b) Data is not magnetic so less subject to errors
 - c) They have quicker access time than a floppy drive
 - d) All of the above
194. Which of the following is not harmful for your computer
- a) Malware
 - b) Spyware
 - c) Virus
 - d) Cookies
195. This is based on individuals who know how to use these technologies and those who do not.
- a) Access
 - b) Usage
 - c) Usage Quality
 - d) None of the above
196. This refers to the gap between people who possess regular access to information technology and those who do not have this access.
- a) Digital divide
 - b) Discrimination
 - c) Computer divide
 - d) None of these
197. This type of digital divide is based on the difference between individuals with access and those without access.
- a) Access
 - b) Usage
 - c) Usage Quality
 - d) None of the above

198. It is based on the differences in the quality of using information technology.
- a) Access
 - b) Usage
 - c) Usage Quality
 - d) None of these
199. Who started Free Software foundation?
- a) Linus Torvald
 - b) Richard M Stallman
 - c) GNU
 - d) None of the above
200. This kind of attack involves altering raw data just before a computer processes it and then changing it back after the processing is completed.
- a) Data diddling
 - b) Salami attacks
 - c) Virus attack
 - d) None of the above
201. This kind of crime is normally common in the financial institutions or for the purpose of committing financial crimes.
- a) Data diddling
 - b) Salami attacks
 - c) Virus attack
 - d) None of the above
202. IT Act in India was amended in
- a) 2000
 - b) 2004
 - c) 2008
 - d) None of these
203. This is a person who gains unauthorized access to a computer network for profit, criminal mischief or personal pleasure.
- a) Hacker
 - b) Cracker
 - c) Programmer
 - d) None of these
204. This refers to environmentally sustaining computing or IT.
- a) Cloud computing
 - b) Green computing
 - c) Electronic computing
 - d) None of the above
205.is the Universal character encoding standard, used for representation of text for Computer processing.
- a) UNICODE
 - b) SAP
 - c) JAVA
 - d) None of the above
206.software is a matter of Liberty not Price.
- a) Free
 - b) Proprietary
 - c) Application
 - d) None of these
207.refers to a code of safe and responsible behavior for the Internet Community
- a) Cyber Ethics
 - b) Social issues
 - c) Cyber crime
 - d) None of the above
208. refers to unlawful acts wherein the computer is either a tool or target or both.
- a) Cyber crime
 - b) Cyber ethics
 - c) Cyber law
 - d) None of the above
209.refers to sending large number of mail to the victim, which may be an individual or a company or even mail servers there by ultimately resulting into crashing.
- a) Email bombing
 - b) Logic bomb
 - c) Virus
 - d) None of the above

210. are programs that attach themselves to a computer or a file and then circulate themselves to other files and to other computers on a network.
- a) Virus
 - b) Logic bomb
 - c) Web jacking
 - d) None of these
211. In the hacker gains access and control over the web site of another.
- a) Web jacking
 - b) Time theft
 - c) Logic bomb
 - d) None of the above
212.are event dependent programs.
- a) Logic bombs
 - b) Trojan bombs
 - c) Salami attacks
 - d) None of these
213.is the process of coding and scrambling of messages to prevent unauthorized access to or understanding of the data being transmitted.
- a) Encryption
 - b) Firewalls
 - c) Antivirus program
 - d) None of the above
214.refers to the compulsive Internet use which interferes with daily life, work and relationships.
- a) Cyber addictions
 - b) Alcohol addiction
 - c) Drug addiction
 - d) None of the above
215.is a situation where an individual is given too much information and as a result he is confused and cannot make optimal decisions.
- a) Information overload
 - b) Cyber addiction
 - c) Internet addiction
 - d) None of the above
216.can be defined as electronic equipments or products which have become obsolete due to advancement in technology, changes in fashion, style and status and nearing the end of their useful life.
- a) E-waste
 - b) Toxic waste
 - c) Computer waste
 - d) None of the above.
217. Which chapter of the IT Act deals with computer related unlawful acts?
- a) Chapter X
 - b) Chapter XI
 - c) Chapter IX
 - d) Chapter VIII
218. Linux is a
- a) Database program
 - b) Application program
 - c) Operating system
 - d) None of the above
219. This is a software that is distributed under a licensing arrangement and which allows the computer code to be shared, viewed and modified by other users and organisations.
- a) Free software
 - b) Open source software
 - c) GNU
 - d) None of the above
220. Fedora, a community distribution sponsored by
- a) RedHat
 - b) Novell
 - c) Oracle
 - d) None of the above

221. OpenSUSE a community distribution mainly sponsored by
- a) RedHat
 - b) Novell
 - c) Oracle
 - d) None of the above
222. This is a storage location from which software packages may be retrieved and installed on a computer.
- a) Software distribution
 - b) Software repository
 - c) Operating system
 - d) None of the above
223. AbiWord is a :
- a) Word processor
 - b) Spreadsheet
 - c) Database
 - d) None of these
224. In Open Office.org. "Calc" is a
- a) Word Processor
 - b) Spreadsheets
 - c) Database
 - d) None of these
225. Unix is an.....
- a) Operating system
 - b) Application software
 - c) Database program
 - d) None of the above
226.is a popular desktop and server distribution derived from Debian, maintained by Canonical Ltd.
- a) Debian
 - b) Ubuntu
 - c) Fedora
 - d) None of the above
227. Repositories are also known as
- a) Library
 - b) Stories
 - c) Files
 - d) None of these
228. In Open Office.org. Impress isprogram
- a) Presentation tool
 - b) Word processor
 - c) Spreadsheets
 - d) None of these
229. Which is not a part of Open Office.org software?
- a) Open Office.org Notepad
 - b) Open Office.org Writer
 - c) Open Office.org Draw
 - d) Open Office.org Base
230. PDF stands for
- a) Portable Document Format
 - b) Portable Document File
 - c) Pre Defined Format
 - d) Pixel Dots Format
231. DTP stands for.....
- a) Desk Top Printing
 - b) Desk Top Publishing
 - c) Desk Top Page
 - d) None of these
232. Which of the following is not a graphics format?
- a) JPEG
 - b) TIFF
 - c) GIF
 - d) None of these.

ANSWER KEY

1. A	2. B	3.B	4.C	5.D	6.D	7.A
8. B	9.D	10.C	11.C	12.A	13.D	14.D
15.B	16.D	17.D	18.B	19.B	20.A	21.D
22.A	23.D	24.B	25.A	26.A	27.A	28.A
29.A	30.B	31.A	32.B	33.B	34.C	35.A
36.D	37.B	38.C	39.B	40.A	41.B	42.A
43.C	44.B	45.B	46.C	47.A	48.A	49.A
50.A	51.A	52.C	53.B	54.A	55.A	56.A
57.A	58.A	59.A	60.A	61.D	62.D	63.B
64.D	65.C	66.C	67.B	68.D	69.A	70.C
71.C	72.A	73.B	74.B	75.B	76.B	77.A
78.A	79.C	80.A	81.D	82.B	83.C	84.D
85.A	86.C	87.A	88.B	89.B	90.D	91.C
92.C	93.D	94.C	95.C	96.B	97.C	98.B
99.B	100.A	101.D	102.A	103.C	104.C	105.D
106.A	107.C	108.D	109.D	110.A	111.A	112.B
113.D	114.A	115.B	116.D	117.D	118.D	119.C
120.D	121.D	122.D	123.A	124.C	125.D	126.D
127.D	128.B	129.B	130.D	131.B	132.B	133.D
134.B	135.B	136.C	137.B	138.A	139.A	140.A
141.A	142.A	143.A	144.B	145.C	146.A	147.A
148.A	149.D	150.A	151.A	152.D	153.B	154.D
155.D	156.B	157.B	158.C	159.A	160.A	161.D
162.C	163.A	164.B	165.B	166.A	167.C	168.C
169.B	170.A	171.A	172.A	173.A	174.A	175.A
176.A	177.A	178.A	179.B	180.D	181.D	182.D
183.C	184.A	185.A	186.C	187.A	188.B	189.A
190.B	191.A	192.A	193.D	194.D	195.B	196.A
197.A	198.C	199.B	200.A	201.B	202.C	203.A
204.B	205.A	206.A	207.A	208.A	209.A	210.A
211.A	212.A	213.A	214.A	215.A	216.A	217.B
218.C	219.B	220.A	221.B	222.B	223.A	224.B
225.A	226.B	227.A	228.A	229.A	230.A	231.B
232.D						



©
Reserved

Siraj.ch
www.facebook.com/sirajch
skype@sirajch1